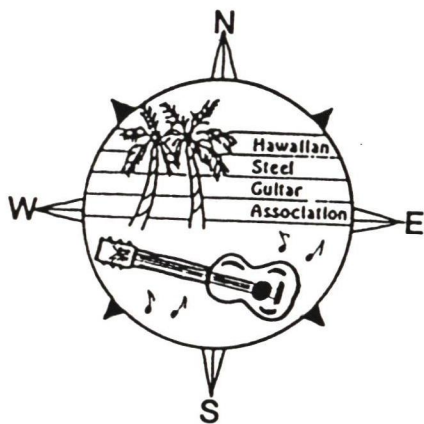


HAWAIIAN STEEL GUITAR ASSOCIATION

BOX 3156 BELLINGHAM WA
98227

ADDRESS CORRECTION REQUESTED

Bulk Rate
U.S. Postage Paid
Bellingham WA. 98225
Permit #67



APELLA, 1989

YEAR OF THE CENTENNIAL

JOSEPH KEKUKU

In our last issue we had a bit of fun about the sound of an object dropping on the strings of a guitar. We all know that this serendipitous experience led to Joseph's building the adaptations which would make the Hawaiian Steel Guitar a new instrument in its own right, and we know that he did the work in the Kamehameha school's machine shop. We know that he perfected the playing technique, taught his classmates, and toured the world captivating audiences with the beautiful new sound that came to mean "Hawaii". But what about Joseph himself?

Joseph was born in Laie, Oahu in 1874. The first time he played his new guitar in public was at Mission Memorial. He left school in 1897 and took his guitar to mainland U.S.A. in



JOSEPH KEKUKU

"Inventor" of the Hawaiian Guitar

PHOTO BY MIRO AND RUBY MAXIMCHUK

1904, where he played in every theatre of renown from coast to coast. In 1919 he went to Europe for a tour which lasted eight years. He played before kings and queens of different countries, touring with the "Bird of Paradise" show. Back in the U.S., he opened several studios in Chicago and became a very successful steel guitar teacher. He died after a brief illness in January, 1932 in Dover, New Jersey.

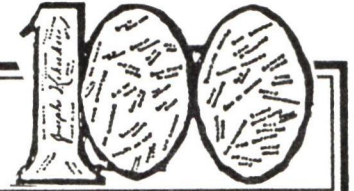
Joseph Kekuku made Hawaiian music acceptable to the world and there was a time when no Hawaiian musical group was complete without a steel guitar. Just as the bagpipes signal "Scotland" to the listener, so the steel guitar has become the SIGNATURE SOUND of Hawaii. Through HSGA, we have a communications centre to co-ordinate our efforts to carry on the fight long

after this centennial celebration is over, to make the public and the musicians of Hawaii aware that something very precious may be lost forever if steel guitar is not included in performances of the traditional music of Hawaii.

I would like to close with the words of Tony Todaro..."Listen closely next time you hear a steel guitar solo -

listen and you can hear its haunting strains whispering softly but clearly, "I am the soul of Hawaiian music, I can be sad - I can be glad; I can be haunting - I can be taunting; I can be most anything you want me to be - but I cannot be neglected and lonely. Play with me, caress me, keep me in tune and I'll give you forever the stars and the moon".

1889-1989 CENTENNIAL



1989 DECLARED THE YEAR OF STEEL GUITAR

Yes Frank Fasi, the mayor of Honolulu, has declared this to be the year of steel guitar because of H.S.G.A.'s celebration of the event. After all the "WHEREAS" clauses, he proclaimed, "I...do hereby proclaim 1989 as THE YEAR OF STEEL GUITAR in the City and County of Honolulu in special recognition of the 100th anniversary of the authentically Hawaiian musical instrument and urge everyone in our community to support its revival in the islands." Here's what HSGA is doing to support its revival in the islands:

Our keen letter-writing squad is continuing to melt the typewriter keys telling the world about our centennial. **JIMMY HAWTON** sends very eloquent missiles to those

in high places in Hawaii to get a better deal for steel guitar and for traditional Hawaiian music in general. **ARTICE MARTIN** tells me Jimmy had an article in "Hawaii" magazine about the music of Hawaii. He also wrote to Charles Kurralt (sp?) of CBS "Sunday Morning" to see if he would do a story on the steel guitar. **JEAN VOGEL** has written an article for "He Kukini", a Hawaiian magazine. **LEIGH TRIGGS** is just as involved in this crusade as I am. He's a "wordsmith" of the highest order, and when he sends a letter, boy-oh-boy the reader takes notice. He puts lots of impact and just enough mystery into the letter and then refers them to me for "further information". Reminds me of the hunter who went out after grizzly bear, leaving the cook at work in the cabin. In short order the hunter came racing full-speed in the front door of the cabin and out the back window

with a grizzly in hot pursuit. As he roared past the poor astonished cook, he shouted, "O.K., I brought him home, now you skin him!" What a team!

Here's a list of SOME OF the letters Leigh's written: to American Hawaii Cruises, Hyatt Regency Hotels (Honolulu), Westin Hotels Honolulu, Hawaii Magazine, Aloha Pacific Cruises, United Press International, Sheraton Hotels (Honolulu), "This Morning" KCBS Hollywood, The Today Show KNBC Burbank CA, Pleasant Hawaiian Holidays, Morton Gould - president of ASCAP, Dept of Parks and Recreation Hilo HI, "Good Morning America" KABC Hollywood, and United and American Airlines. Isn't that an impressive list? I hope this will lead to employment for many steel guitarists in Hawaii. When the people listed above write to me for more information, I send them the directory list that I've made up, giving them all the steel guitarists (to the best of my knowledge) in Hawaii so they can contact them for employment. The Sheraton Hotels and the Hyatt Hotels have both expressed strong interest in having steel guitar played in their lounges. Steel players in Hawaii take note - apply to the Sales Promotions office, not the food and beverage people. The Kona Hilton is VERY interested - see Vivian T. Mur, Senior



FOR LEIGH TRIGGS

Sales Manager to perform in their Windjammer Lounge.

Incidentally, Leigh has just been called to jury duty. Let's hope it's a short but entertaining case. For all the work Leigh has done on behalf of the club, let's give him H.S.G.A.'s highest award - THE OCTAVE GLISS!!!!

DEAU STERLING suggests we might do something about the advertising on radio and TV of the sort in which "Blue Hawaii" is played on a saxophone. You must contact the people in your area who make the sound tracks for advertisements. Check the yellow pages and phone around. When you locate them, send them a demo tape and write them a letter. Let them know there's a steel guitarist in their area who can do the job to make Hawaiian advertising AUTHENTIC. I think they will welcome you with open arms.

MR. & MRS. BUD GLENS wrote to Aloha Cummings Travel and referred them to me, (mahalo nui loa) and I answered with my "centennial" information. Then I wrote to 34 shopping malls on Oahu asking them to do a special promotion using the centennial theme and to hire steel guitarists. To help them, I provided each with my steel guitar players of Hawaii directory. I have written to

OHA News Magazine, to FIGA, and to FRETTS Magazine asking them to do a centennial write-up. Fretts has agreed to do so. I've supplied Delta Airlines with pictures and material for an article they will do in their in-flight magazine "SKY", April issue. Anyone flying Delta in April, please pick up as many extra copies as you can for our convention registration desk. Reporter Jim Gullo did a full one-page write-up titled "STEEL GUITAR CENTENNIAL" in Hawaiian Beat, a publication of the Hawaiian Visitors' Bureau. It features a lovely color picture taken at the Halekulani of Alan Akaka, Benny Kalama, and Sonny Kamahale. **FRED BARNETT** is contacting all the free weekly entertainment magazines in Oahu to advertise our concert in the park, and I have written a follow-up letter supplying them with pictures and a copy of the Mayor's proclamation. Radio station KCCN is showing great enthusiasm for the centennial. They refer to it quite often on the air and they will give us extensive coverage during the week of May 7 - 14th. They interviewed Alan Akaka recently, and Merle Kekuku did an interview with Emmy Tomimbang for the "Hawaiian Calabash" show. Reporter Melanie Kosaka of Hawaiian Public TV phoned me. She is putting together information for a TV special to be shown May 17 on cable 10 about the centennial. Jerry, Barney, Alan, Merle, and Tau Moe will be involved. I

think our centennial is WELL PROMOTED.

HISTORY OF STEEL GUITAR:

Dr. Mantle Hood and his student, Frank Vice, continue to collect material for the manuscript. Please do submit whatever material you have, even if you doubt whether it would be suitable. It may be exactly what they're looking for. Bud Tutmarc has submitted the story of his father's having been the first to invent the electric pick-up for the steel guitar, standard guitar, and bass. It's a good story. I will try to find room in the newsletter for it soon. So, PLEASE DO send your contribution to: Dr. Mantle Hood, 2816 Deerfield Dr., Ellicott City MD, 21043

TEXAS AREA STEEL GUITAR EVENTS:

A.K.FAIN of 37 Acorn Hill, Huntsville, TX 77340 says that he wants to publish an article covering all musical events in the state of Texas planned for the year 1990. He wants events such as steel guitar concerts, festivals, fiddle contests, bluegrass festivals, music jamborees, square dances, and large musical entertainment events. Send him your address plus the address of the event, phone numbers, ticket information, admission cost, and names of individuals to contact. He didn't indicate to us whether he is on the

staff of a news magazine or just where this list would appear.

THE INSTITUTE OF CONTEMPORARY ARTS IN LONDON, ENGLAND

is still working on plans to do a show tracing Hawaiian steel guitar to the world's continents and demonstrating how it changed and adapted to local music influences. In the October issue I said this would happen in spring, 1989. However, in a recent phone call to me, they indicated the date to be in October, 1989. I believe the show is still to be called "SLIDING AROUND THE WORLD" and we're trying to locate steel guitarists in Africa and South America. Can any of you supply names and addresses of steel guitar players in either of those continents? I don't believe we're going to search in Antarctica. Steel guitar was never played much down there because penguins don't have laps.

'SALUTE TO JERRY BYRD'

On December 10th, radio station WRFG, Atlanta GA did an hour-long salute to Jerry by playing selections of his greatest (and that's easy to do, since everything Jerry does is 'the greatest'). We have a tape recording of that show and the true enjoyment of the D.J. as he talks about Jerry and spins one delicious platter after another is so obvious, I kept thinking

as I listened, "Why weren't you playing this beautiful music all along? I'll bet you'll be including Jerry in your shows from now on."

'HISTORY OF STEEL GUITAR' - AUSTRALIAN VIDEO DOCUMENTARY

We have a letter from HSGA member Bill Knox of PO Box 437 Manuka, ACT Australia 2603, "...Unfortunately I will not be able to make it to Hawaii in May for the convention but plan a trip later in the year to work on a video documentary on the steel guitar and its place in the evolution of Hawaiian music. I will contact you after all the excitement of May has settled, but in the meantime please keep in mind that I would appreciate learning of archival material on the steel guitar, especially film, that I might have access to in due course." Editor's note: I'll be glad to help. Will members seeing this request please send anything you have to Bill? And Bill, will you offer copies of your video for sale to HSGA members? We'll be happy to advertise it for you. When in Hawaii, contact club member Regina Pfeiffer for help with research.





STEEL GUITAR EUROPIE

This is Part 2 of Thomas Malm's essay on the history of steel guitar in Sweden.

In 1937 **Yngve Stoor** (1912 - 1985) revolutionized Hawaiian music in Sweden. He imported the first electric steel into Sweden, a Gibson single-neck, and became the most successful of all Swedish musicians in his field.

Yngve was born near Falun, Sweden, and was the last of thirteen children. As a schoolboy he began to play the mandolin, then became a talented violinist. His whole life changed one night in Stockholm when he went to watch a movie about the South Seas. A man from France, dressed in a white suit and a crimson sash came up on the stage and played "Aloha Oe" on an acoustic steel guitar to set the mood for the film. Stoor fell in love with the instrument at the very first sound. He learned to play it and formed his first orchestra in 1928.

Yngve and his Hawaiian Orchestra toured Scandinavia



YNGVE STOOR WITH FELLOW-MUSICIAN SONE BANGER

for many years, the most booked artists of the 1940's. He was an active musician, singer, and composer for over 50 years and wrote more than 500 songs. On his earliest recordings he used the acoustic steel guitar and played duets with his brother Erland on some of

them. Later, Erland played ukulele or rhythm guitar on recordings. Yngve recorded 30 albums, dozens of 45's and many 78's and later produced his own albums under the "Lani" label.

Besides operating a music store, Yngve wrote a manual for ukulele, two for the steel guitar, published sheet music, and wrote two autobiographies. Since 1951 he visited the Pacific islands eighteen times, appearing on television and radio. Two of his songs have been translated into Hawaiian and Fijian.

All of his LP's and cassettes are still available. A complete list may be ordered from: Schlagerförlaget Lani Musik AB, Buxbomsvägen 57, S-125 31 Älvsjö, Sweden.

The only other Swedish steel guitarist to record in the 40's and 50's was Kiki Stenfeldt. She was an excellent player and recorded standard popular tunes of Hawaii. In the 1970's Sven "Hula-Pelle" Storchag, made a few recordings. There were many who sang and composed songs of the South Pacific but if steel guitar was included, it was only as a back-up instrument.

Even though the Pop craze swept Sweden in the 1960's, two South Sea songs became runaway hits: a Tahitian *tamure* called "Vini Vini" and a New Zealand Maori song called "Putti Putti" sung by Jay Epae, who toured Sweden with Yngve Stoor's orchestra. A disc jockey on a pirate radio station "Radio Nord" played Putti Putti over and over

again. To the Swedish people, Hawaiian music was something that could be heard only on radio. A radio producer stated that during the 1970's there was more Hawaiian music than traditional Swedish music broadcast.

Some of the Hawaiian musicians from other countries who have performed in Sweden are: the Tau Moe Family, the Kilima Hawaiians, the Danish group Malihini, Bud Tutmerc, Nancy Gustafsson (a Swede living in Hawaii) with her husband Victor Rittenband, and groups from the South Pacific.

The biggest Hawaiian show ever to be seen in Scandinavia was a musical comedy called 'The Flower of Hawaii'. In 1982 I had the honor of playing ukulele and steel guitar in about 100 performances of this show, written by Paul Abraham in 1931. The director and big star of the show was Nils Poppe, one of the most popular Swedish comedians, 74 years old at the time. We had plastic palm trees and three grass shacks on the stage, as well as a waterfall and silhouette model of the Royal Hawaiian Hotel. The Swedish dancers dressed like the girls in the Kodak Hula Show and looked more Hawaiian than many Hawaiians. They were taught the hula by Albert Gaubier, a very famous choreographer. In 1985 Klas Möllberg gave ukulele instruction on TV and many adults and children, including the crown princess Victoria, began to play it. Hawaiian

music is a little less popular now but still means a lot to those who were young in the 30's and 40's. During my journeys to the Pacific, I have often met Swedish tourists who have told me that they got the desire to go there after being captivated by the romantic sound of Hawaiian music. Here in the land of Vikings and snow the Hawaiian steel guitar, introduced by Segis Luvaun almost 70 years ago, has certainly been a wonderful "ambassador" for all the aloha offered by the islands so far beyond the horizon.

Thank you very much for that article, Thomas. Now, I'd like to tell our readers something about Thomas himself. We met him just last year when he stopped in Vancouver

enroute from a several-years' stay in the South Pacific to his home in Sweden. Thomas is a delightful, very intelligent, very talented (and very handsome, ladies) young man in his late twenties. I found it hard to believe that one so young could have such knowledge of the many Polynesian cultures and be fluent in so many languages. We invited our Fijian friends to join us for dinner and they were astonished with his perfect recall for places and people and the language of Fiji, when that was one of the countries he'd spent very little time in.

Thomas is a marine biologist by profession and has performed many times on radio and TV as steel guitarist and vocalist (he is excellent at both, as well as being an enter-

tainer). He has produced several recordings which are available for sale (see ads in this issue and last issue). He has written one book and many articles about the Pacific and when he returns to Sweden from his travels in the South Pacific he is in great demand as a lecturer and guest speaker.

When Thomas was visiting us, when we weren't sightseeing with him we were jamming. We hooted with laughter as



THOMAS MALM AT STEEL GUITAR WITH TAU, LANI, AND ROSE MOE
NANCY RITTENBAND DANCES



THOMAS WITH FIRE DANCER FROM RAROTONGA

Thomas rode the frypan around our music studio singing the 'Hawaiian Cowboy' in a way that would make Sol Bright proud. We realized that the fate of the Hawaiian steel guitar is in the hands of beautiful young people like Thomas. He is one of our brightest stars.

ON TO WEST GERMANY WITH RUDOLF BARTEN

Rudolph is a professional steel guitarist whose latest recording can be ordered from: K-tel International, (Switzerland) AG, Laurenzgasse 5, CH-8035 Zürich, Switzerland. The recording has 16 German and European pop tunes, titled "Hawaii - Traumklänge der Südsee", (Hawaii, Dream-sounds of the South Pacific) order numbers MCH 232 for the cassette,

TCH 231 for the album, CD 3626 for the CD. Rudolph apologizes for the choice of songs which was made by the producers of the recording. He says it is well advertised by a big radio and TV publicity campaign.

In May of 1988 Rudolf and his wife Ingrid made their first ever visit to Hawaii. It was a four-islands escorted tour and he shares their experience with us. It was all very lovely, says Rudolf, and the people most memorable and helpful were: Mrs. Nancy Rittenband, Mr. Tau Moe, Mrs. Melveen Leed, and the tour organizer, Mr. Howard Yoshida.

Enroute to Hawaii, Rudolf visited his steel guitarist friend Maurice Anderson in Dallas who told him he could expect to find steel guitar played everywhere he went in Hawaii. "And he was right," says Rudolf. "In buses, elevators, dress shops, from every loudspeaker there it was - steel guitar music!! When I asked native looking persons where to find live steel guitar, they shook their heads. Some didn't know what I was talking about. Others said that these old fashioned instruments were no longer played today. At the House of Music a nice person tried to help me find steel guitar albums, but it was all old stock, there were few new releases. After much searching I did find two that I didn't already own. I regret that the section for this kind of music was small - an

in insignificant corner - compared to the large stock of "other" music.

What a discrepancy between imagination and reality! They hear it all day long, but they don't realize that this music - yesterday, now, and for the future - is part of the islands. It is part of the touristic success that brings the second largest turnover to the 50th state's budget!!

We saw some very glamorous Polynesian shows and Hula stage performances and many guitars, but no steel guitars. Someone tried to copy the sound with a Yamaha organ. Without doubt Yamaha organs are excellent at imitating other instruments but the sound of our beloved steel guitar cannot be copied with all the electronic tricks. They tried, and it made me sad.

But, I had positive experiences too. At



RUDOLF BARTEN AND MELVEEN LEED

the Halekulani Hotel every day from 5:30 to 8:30 p.m., we heard two excellent steel guitarists. I do not know their names but Ingrid and I enjoyed them very much. I am sorry I didn't have the chance to thank the management for their initiative. I only hope that they continue to be an example for those who forget....

We had the great pleasure of meeting my most favorite Hawaiian singer, Mrs. Melveen Leed, at her performance at the Ala Moana Hotel. She was an old friend of mine because of the 12 albums of hers that I own. No steel guitar in her show, but in this case I can forget as she is the most perfect expression of everything which is Hawaiian music: smoothness and fire, romance and rhythm, and her voice is incomparable! I talked with her after the show for about ten minutes and gave her three of my steel guitar cassettes. What a lovely and beautiful lady, without a sign of arrogance or superciliousness, attributes which can be found in too many of the great stars.

Throughout the trip to the four islands, we heard steel music from every speaker, so I think it must be their favorite music too. So, why don't they play that steel guitar any more? I admit our instrument is a little difficult to master, but a young musician, if he becomes a good player, would not have much competition since there are so few players. They would have the very

best chances in Hawaii, in my opinion."

Editor: Thank you for your story, Rudolf. I hope all our members, when in Hawaii will seek out the management and COMPLIMENT when they hear steel guitar being played and COMPLAIN if they don't. If we don't speak up, how will they know THERE IS a tourist demand. One of my

favorite ideas submitted by a member is this: PHONE A LUAU OR A BIG SHOW. MAKE RESERVATIONS FOR A PARTY OF 24, THEN ASK "WHO IS YOUR STEEL GUITAR PLAYER?" AND WHEN THEY CONFESS THAT THEY HAVE NO STEEL PLAYER, YOU SAY, "THEN PLEASE DIRECT ME TO A LUAU/SHOW THAT DOES HAVE ONE."

CONVENTIONS AND GET-TOGETHERS

H.S.G.A.'S JOLIET CONVENTION SEPT. 7, 8, AND 9TH

Frank and Donna are making plans already to host our third Joliet convention. It will be at the same location, the Holiday Inn. The dates are changed to Thurs., Fri., and Sat. because we noticed people are under pressure to get away on Sunday to be back to work on Monday. Not one but TWO star attractions have been invited: Barney Isaacs and Jerry Byrd!! There is a good possibility we could end up with both of them, so if you can't get to Hawaii HSGA brings Hawaii to you. We'll let you know more in the July newsletter.

STEEL GUITAR GET-TOGETHER IN VANCOUVER SAT. JULY 8/89

Members in the Vancouver area invite you to plan your holidays so you'll just happen to be in Vancouver on

Saturday, July 8th. Bring your steel guitar with you and we'll all meet at the Tahiti Hut, 73rd and Hudson St. (at the south end of Vancouver) at 1:00 p.m. and we'll share Aloha into the evening hours. No charge. Phone Lorene and Art, 604-263-8944 for details.

CENTENNIAL ALOHA CONVEN- TION IN HAWAII

Registrations are rolling in. We expect a great turn-out. I wish I had the space to tell you how many people from what far-off countries, but would you believe - Onni Gideon from Finland, Ken Kitching from Australia, Georges Chatagny from Switzerland, Carol Adams from Australia, Rudolph Barten from West Germany, Arthur Jones of the U.K., Kay Gray our 'Haole Hilo Hattie' from Sedro Woolley WA, and many many more. What fun it will be!

Just tonight we got a call from Berklee College of Music in Boston. There's a good possibility a staff member will attend our convention as an observer. The World's Oldest Teenager will be there playing his acoustic Martin guitar. He says, "I'm preparing a Sol Hoopii type solo. Exciting! Thrilling! Humorous! Challenging to those who try to back me up. Even better than my Malaguena or Laughing Rag, so be prepared to jump up and give me a STANDING OVATION when I play it in Honolulu."

For those of you who haven't yet registered, I hope you understand what a difference it makes to me if I know you're coming and who is coming with you. Here in my home with my computer, photocopier, typewriter, paper cutter, etc. etc. it's quite easy to get all the material ready

so you can just pick it up at the registration desk in Hawaii. BUT, if you don't tell us you're coming and then you surprise us in Hawaii, we'll be delighted to see you but it will mean we have to "do it the hard way" to process your registration, when we'd rather be out enjoying the holiday too. This is all volunteer work So PLEASE, if you haven't registered with us, do it right away. April 16th is the last day we will pick up mail in Bellingham. You have the option to pay the registration fee at the desk in Hawaii, but we need your registration information in advance.

Ho'olaule'a tickets are \$10.00 each at the Special Events Desk, Ala Moana Hotel, 410 Atkinson Drive, Honolulu HI 96814 ph 808-955-4811. Tickets go on sale Apr. 15th.. No advance sales, no seats reserved. First come first served.

CENTENNIAL CONVENTION AGENDA

(Don't forget to consider buying a bus pass as soon as you arrive in Hawaii. It's hard to find parking space for a rental car, and the Queen Kap is located at the start of the bus run, so you'll always get a seat on the bus.)

SAT. MAY 6: 2:00 - 4:00 Registration in lobby of Queen Kap Hotel

_____ Sign up for snorkeling tour with Fred Barnett,
 _____ date not set yet. You must supply your own snorkel.

_____ Buy tickets to lunch at The Willows Restaurant

SUN. MAY 7: Morning service at Kawaiahao church, begins at

_____ 10:30 a.m., but you should arrive early
 _____ 11:00 - 1:00 some H.S.G.A. members playing steel
 _____ at cultural fair, Bishop Museum grounds. It's a

_____ big annual event, well worth attending.
_____ 2:00 - 4:00 Registration in lobby of Queen Kap Hotel
_____ 7:00 p.m. Jerry Byrd Steel Guitar Ho'olaule'a at
_____ Ala Moana Americana Hotel

For these events, arrange your own transportation. We will provide bus maps.

MON. MAY 8: 8:30 - 3:30 Music sessions in Akala Room. Lunch served.

_____ 4:00 p.m. board meeting

TUE. MAY 9: 8:30 - 3:30 Music sessions in Akala Room. Lunch served

~~WED. MAY 10:~~ 8:30 - 3:00 Music sessions in Akala Room. Lunch served.

_____ 3:00 - 3:30 general meeting

THU. MAY 11: 12:00 Noon. Lunch at The Willows. Cost \$14.30 which

includes tax and tip. Limit of 50 people. Arrange your own transportation.

FRI. MAY 12: Presentation of plaque at Kamehameha School some time

_____ in the morning. A limit of 30 people invited, so

_____ we will choose representatives from each country

_____ in attendance, plus board members, executive, and

_____ Hawaiian musicians.

SAT. MAY 13: 10:00 - 4:00 Concert at Bandstand in Kapiolani Park,

_____ probably won't get started until 11:00.

PEACOCK ROOM. QUEEN KAP.

My spies tell me there is no entertainment in the Peacock Dining room at the Queen Kapiolani Hotel on Monday or Tuesdays. If any of the H.S.G.A. gang want to volunteer to do the dinner hour music there, the opportunity awaits them. They would have to arrange for their own back-up crew and amplification. If any of you decide to "go for it", let us know so we can announce it during the playing sessions.

TAMARIND PARK

Regina Pfeiffer, our historical researcher in Honolulu, points out that a good opportunity awaits a keen up-and-coming steel guitarist who would like to suggest to KCCN that they might sponsor him and his group for a concert at Tamarind Park to gain a little publicity for our concert in Kapiolani Park on Saturday. Perhaps some of Jerry's students would be interested in this? You

know, the centennial lasts for the whole year of 1989, and it's important to keep up the action throughout the year.

SHERATON HOTELS WANT STEEL GUITAR

Are you interested in doing some steel guitar work in a lounge at one of the Sheraton hotels? Contact Ms Maggie Wunsch, Director of Public Relations, Sheraton Hotels, 2255 Kalakaua Ave. Honolulu 96815

ALOHA PACIFIC CRUISES

These people are keen on having steel guitar featured on their cruise ships. Contact Morten Mathiesen, Executive Director of Hotel Operations, or Jon de Mello, Musical Director, or Alan Grier, Corporate Cruise Director. Check the phone book for the Hawaiian address. The address I have is 510 King St., ste 501, Alexandria, Virginia ph 703-684-6263.

JIMMY HAWTON'S STEEL GUITAR WEST

Congratulations to Jimmy!! He just pulled off a very successful get-together. He says he had an atten-

dance of about 200 and will have to book a larger room at the Clarion Inn next year. Joe Boudreau reports they had a great time and didn't mind the crowding one bit. Bobby Black (Ho'olaule'a star of 1987) was there and, as Joe Boudreau puts it, he..."regaled a drooling audience for the last hour and a half on his favorite Rickenbacker twin 8 non-pedal". Of Jimmy Hawton, Joe says, "I was very favorably impressed with Jimmy's playing style. That dude is d.....good!" And so was the Kapalakiko Hawaiian Band with Dwight Saichi on steel. Gee, I wish we'd been able to make it. Maybe next year....



BOBBY BLACK, STANDING, JIMMY HAWTON SEATED

***FROM IGNACY PADEREWSKI, CONCERT PIANIST AND
EVENTUALLY PREMIER OF POLAND: "IF I DON'T
PRACTICE FOR ONE DAY, I KNOW IT. IF I DON'T
PRACTICE FOR TWO DAYS THE CRITICS KNOW IT.
IF I DON'T PRACTICE FOR THREE DAYS, THE
AUDIENCE KNOWS IT."***

KĪKA KILA KĀLĀ KULA

(SCHOLARSHIP FUND)

STATEMENT OF ACCOUNT TO DATE:

Balance as of January newsletter _____ \$ 61.50

Plus sale of decals and one seminar tape _____ 43.26

Balance as of this newsletter _____ \$104.76

The figures shown here refer to the amount held in a special account in Bellingham, WA. When the amount is significantly over \$100, we send a check to Jerry. He reports on the work he is doing and how the money is being used. Jerry advises us that he is still working with the same students, with a fairly long waiting list on hand. Nothing new is happening right now.

KAMEHAMEHA SCHOOLS TO PUT STEEL GUITAR ON THE CURRICULUM!!

In a telephone discussion with Randy Fong, Head Master of the Music and Drama departments at Kamehameha Schools, we learned that they have plans to put the study of steel guitar into the school's curriculum for credits in the highschool program. This, to me, is the best news I've heard since we began this campaign to "do something" for steel guitar. I have written many, many letters about that to the colleges and universities. Did the letters do any good? Who knows!! But I believe in the power of the pen. You know, whenever you feel strongly about an injustice and it isn't your style to join the protesters who march and carry signs, you can always take pen in hand and "do something" about

the
problem
without
loss of
dignity.
(...and thus
endeth the
sermon
from the
keyboard.)



PENNY

YAMASHITA, H.S.G.A.'s newest member, tells us about herself as follows: "I've taken lessons from Alan Akaka for two years and often he has told me of this ever-growing Steel Guitar Association. I am currently a freshman at U. of Southern California, a 1988 graduate of the Kamehameha Schools. I am majoring in Education. As a young person of Hawaiian ancestry, my interest in perpetuating

the legacy of Hawaiian steel guitar is alive and vibrant. I still find time between studies to practice steel and keep the "aloha spirit". Another quote from her letter, "I'll definitely be there at the Aloha Days convention". Her home is Ewa Beach, HI. Speaking of her guitar, she says, "I only own, presently, a student steel, a Guiatone (unfortunately). However, if Alan, my steel teacher, can find me a great steel, either single neck, 8-string, or double neck, I'll own a beautiful one soon. If you know of anyone willing to sell one of these to a 'surviving' college freshman, please let me know."

So, here's another challenge to our membership. In the October newsletter we told you of "TUT" KAMOKU on the big island who needed a steel guitar and H.S.G.A. member BEAU STERLING was the Good Samaritan who sent a guitar in tip-top condition, to arrive just before Christmas. We have heard, via coconut cable, that Tut is still grinning from ear-to-ear, has formed his playing group already and is off to the races. If we get to meet him while we're holidaying in Kona, we'll tape record his music and be sure to send a copy to Beau Sterling. If any of you has a spare treasure in the hall closet that would be better off in loving hands, give a thought to the young wahine. You'll meet her at the Queen Kapiolani and perhaps she will play for us then.

VERY LOW-SERIAL NUMBER

FRYPAN FOR AUCTION: I wish to remind you of the article on p.8 of the January issue about the frypan being offered for auction, proceeds to go to the Scholarship Fund. We have a reserve bid of \$550 on it, the deadline for bids is June 1, 1989. Send your bid in a sealed envelope marked "GUITAR BID" on the outside. It will be opened on June 1st in the presence of Peter and Audrey Dunkley and the successful bidder will be advised by phone. Unsuccessful bidders will also be notified. This is a great opportunity to get your hands on a musical treasure and support Jerry's effort to help youngsters in Hawaii become the steel guitar virtuosos of the 21st century. Awesome, isn't it?

SIG VOGEL'S NEW FUND-RAISER:

Sig has picked up 10 more books "Hawaiian Music and Musicians, an Illustrated History" edited by Dr. Geo S. Kanahale which he offers for sale at \$16.00 plus \$2.00 mailing. For every book sold, Sig will donate \$3.00 to the scholarship fund. This is an 8" X 10" book with 500 pages and it is the absolute bible on Hawaiian music, its history and its interpretation. I do not dare to write my newsletters without having it with me. Art and I scoured the bookstores in Hawaii two years ago and found it "unavailable", "out of print", and "nobody wants to part with

their precious copy". Finally we got a second hand copy for \$25.00 and went home happy. Compare that with the deal Sig is offering! By the way, Sig, how do you get your hands on so many copies? I really appreciate the effort you go to, to pass along this

opportunity to our members. Bill Knox in Australia and Anton Stukker of Holland, this book is a MUST for your purposes. I think your mailing costs would be more than \$2.00, because it is a heavy book (2 3/4 lb or 1300g). Sig Vogel, 1101 Casa Grande, Simi Valley CA 93063 ph 805-526-1837

THE PELIEKIENA TALKS STORY

Aloha, my friends! There are a few things I want to tell you about. First, I want to explain to those who haven't figured it out yet, that Art and I live in VANCOUVER, B.C., CANADA (phone 604-263-8944) but we operate the club from a post box in BELLINGHAM, WA, U.S.A., about 55 miles away. We do that for your convenience because most of our members are in the U.S.A. and mailing across the border can be sticky business. We have a cabin 5 miles out of Bellingham, on TOAD LAKE. That's where we



hole up to read the mail and scribble answers to mail on our way home next day. In winter we drive down every two weeks, which explains why there's a delay in answering the mail. We do have a phone at the cabin, 206-733-0234, but it rings in an empty house most of the time.

For those who are mailing tape recordings in Canada, we discovered there is a significant saving in the postal rate if you mail it in an ENVELOPE (which puts it in the category of a letter, providing it's not more than 3/4" thick) as opposed to wrapping it like a PARCEL, which causes the posties to charge you for "special handling" because it's too small as parcels go.

We had a bit of winter this year, but not nearly as cold as many other places. We had snow for about ten days all together, and there was a glorious week of skating on Toad Lake and that is a rare occasion! We hope all our HSGA people came through this very difficult winter in good health.

WHERE THEY ARE PLAYING

SEALIFE PARK

An unidentified steel guitarist plays in the all-Hawaiian show here. Highly recommended. Take the bus, leaving Waikiki around 4:30 p.m. and see the beautiful coastline of Oahu. See the full show of dolphins, whales, etc. At 7:30 the music starts and at 8:00 the show begins, along with a beautiful sunset. There is a snack bar cafeteria style, or you can dine at tables right in front of the stage for \$12.50 (smorgasbord). Price of show is \$8.50. There's a bus to take you home.

STEEL GUITARS AT THE HALEKULANI

Walk through the Halekulani grounds toward the ocean. There, in the House Without a Key, is the only place in Hawaii where you can hear steel guitar being played every day of the week. I have written a letter of appreciation to the management of the Halekulani expressing the thanks of all club members for that consideration.

Steel guitar heaven starts at 5:00p.m. for a happy hour that lasts until 8:30p.m. On Wednesdays, Fridays, and Saturdays, you hear Casey Olsen at the steel guitar with the **HIRAM OLSEN TRIO**. On Sundays, Mondays, Tuesdays, and Thursdays you hear Alan Akaka on steel with **THE**

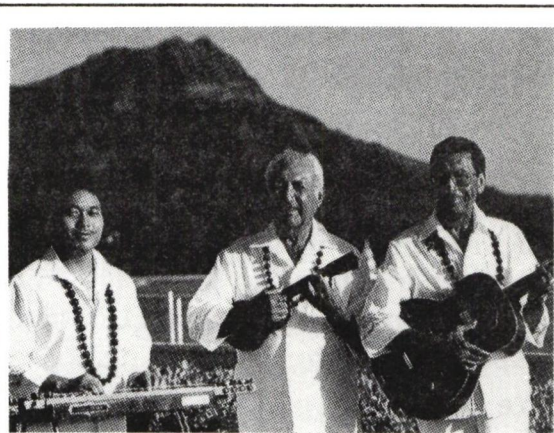
ISLANDERS. Barney Isaacs substitutes at times for a steel guitar player who has to be absent and so does Merle Kekuku.

THE TWO DEANS:

At the Chart House, Ilikai Hotel. No steel guitar, but two young men who play and sing the old Hawaiian "goodies" if you'll ask. They're very good.

UKULELE VIRTUOSO OHTA SAN:

Again, no steel guitar. But you'll hear ukulele at its very best. He's at the Hyatt right now, but who knows by the time we get there?? It's really best to check in the entertainment magazines handed out "for free" on the street.



*ALAN AKAKA, EBINNY KALAMA, SONNY KAMAHELE
AT THE HOUSE WITHOUT A KEY, HALEKULANI*

KŪKA KŪLA (STEEL GUITAR)

I'd like to share with you a letter I received from **Anton Stukker** of Holland: "I'm 44 years old and since about 10 years I've been a real steel guitar fan. Until a few years ago I collected all information about the steel guitar I could get. In that time I've built a pedal steel guitar by myself with help from different people in the U.S.A., Winny Winston, Tom Bradshaw, Fred Layman, and many others.

Four years ago I had a big thorax operation and can't work any more, so I started again with my old passion: collecting all information about the steel guitars and other slide instruments like Hawaiian lap steel guitars, pedal steel guitars, dobros, etc. I'm collecting old and new brochures, mailing, price lists, and pictures. I'm also interested in the technical details, like what type of systems the different companies use, old blueprints, pick-up types, strings, volume pedals, E-bows, etc. Really, I love all information. Please do you have some information, documentation or other material for me that I can use for my collection. Everything is welcome. My address is: **Anton Stukker, Waardenborchstraat 8, 7451 GJ HOLTEN, HOLLAND**". I sent Anton a complimentary copy of the October newsletter with that excellent

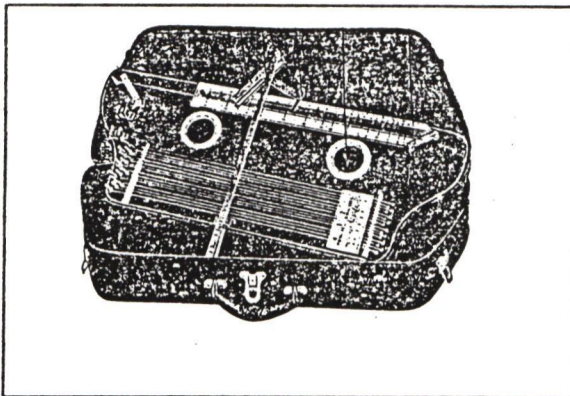
article written by Sam Littke on pick-up construction and John DeBoe's advice about tunings. I hope YOU will have something to send Anton as well.

MEET THE "HAWAIIAN TREME-LOA"... (NOW I'VE SEEN EVERY-THING!!)

The advertisement claims, "The Hawaiian Tremelo might well be called the Original Hawaiian Instrument - a Single Melody String upon which anyone with a tune to play can play without months and years of special training. The soft, sweet, vibrant tones of Hawaiian music are produced as if by magic. The Bass Chords complete the Harmony and permit a wide scope of musical effects. DIRECTIONS FOR PLAYING: The instrument is placed directly in front of player so that bass chords are convenient to player's left hand and the single melody string can be played with right hand throughout its length without difficulty. Playing melody string: When the instrument is packed the roller rests in two felt holders. Lift the roller out of these holders and place it on the melody string. By so doing a spring on the opposite end of the roller bar forces the bar at right

angled to the string. To play, take the celluloid pick between your right thumb and forefinger and move it until it is on the black line of the desired note and then pluck the string. The sliding of the roller as you move the celluloid pick produces the Hawaiian slide effect. Moving the pick a short distance back and forth rapidly after plucking the note produces the Hawaiian tremolo. Playing the Bass Chords: There are four groups of bass strings. Drawing the thumb over any one group produces a chord. A thumb ring may be used."

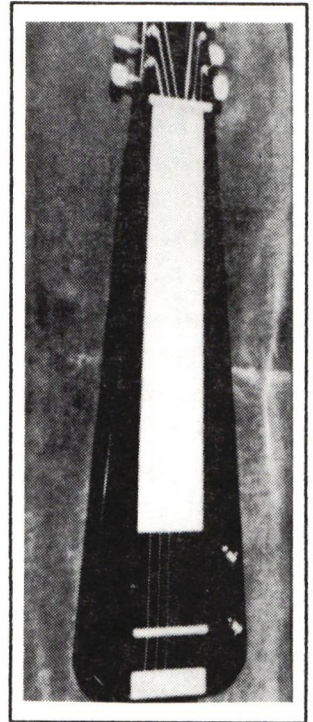
The owner of this musical marvel is Terry Sullivan of 1520 West Prospect Drive, Sebring, FL 33870. He says, "....It is played on the lap with the larger portion away from you. I was told that it was manufactured in the mid-twenties. I have the instructions and quite a bit of number music for it. It is in excellent condition for its age, and the case is in good shape. I would entertain offers, or would trade. Incidentally, the sustain is fantastic



and it's awesome with amplification." Terry, please don't sell it to anyone unless they promise to bring it to one of our conventions and play it for us.

JIMMY HAWTON DESIGNS NEW LOW-COST STUDENT MODEL STEEL GUITAR.

Jimmy has been at work in his sorcerer's den, muttering incantations and mixing strange potions. The result - a very good quality but low-priced single-neck steel guitar which will sell for around \$150. That puts it within reach of any student and will do for many years. For production, Jimmy has put it



in the hands of: ANDREWS BANJO GUITAR CO., PO BOX 5923, NAPA CA 94581.

EXPERTISE OF CONTRIBUTING EDITORS: Have you taken note of the vast storehouse of expertise and information we have on call, in the shape and form of Bob Waters -

historian of steel guitarists, and Jerry Byrd - expert teacher, musician, and recording star?? Why don't we put these people to work for us? If you have any special areas you would like discussed in regard to playing technique, or the psychology of steel guitar, send along your suggestions to me or to Jerry, to be answered in the next newsletter. If you've read the three-part article about Bob Waters just recently run in this newsletter, you will know the sort of information he can supply. Send your questions to me or to Bob. Let's put these gentlemen to work! We're very lucky to have their support.

BACK TO THE BOSS: In the January newsletter, George Lake told us about the MA15A monitor amplifier. We wanted a small unit to take to Hawaii, so we bought the MA12 which is the replacement for the MA15A. We're delighted! It handles both rhythm guitar and frypan with no sacrifice of volume to either instrument and the tone is surprisingly good. In case you're interested, the specs are: Output: 10W (RMS), Speaker: 4" full range 6 ohms, Input: 3 standard jacks (-10dBm), Input impedance: over 50k ohms, Controls: volume, treble, bass, Consumption: 16W (117V), Dimensions: 5 1/4"W, 8 1/2"H, 6 1/2"D, Weight: 5lb2oz.

HO'OMALIMALI



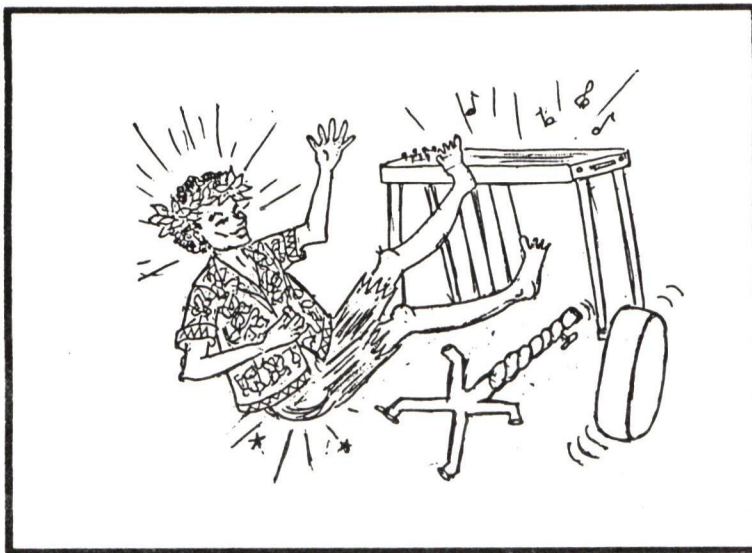
AN IMPROMPTU PERFORMANCE - by John DeBoe

It was a 4-hour Hawaiian and dance gig at an Elks Club party and I was playing the pedal steel. Although the music was 'strictly Hawaiian' that night, Kalani our leader decided she wanted to try "New York, New York". It would be our first time in public, although it was well rehearsed.

The drummer's stool I was using had been giving me trouble in that one of

the metal pins in the adjustable leg brace assembly kept working loose and I had to keep pounding it back in. I had forgotten to do it that night.

We did the first chorus with Kalani singing. The second time around, the lead guitarist and I took it. As I was leading Kalani in to sing it a second time - you guessed it - the pin pulled out and the stool and I ended up sprawled on the floor! By good luck I didn't pull the guitar down on top of



myself! While the drummer and lead guitarist continued to play, Kalani was checking to see if I was O.K. I pounded the pin with my steel bar and re-joined them to finish the song. For posterity, it's all recorded on tape. For the sake of MY posteriority, I bought a new stool!



IDA KINE DISC

ALAN AKAKA CELEBRATES NEW RECORDING

In a gala evening at the Halekulani, Alan Akaka announced the release of a new recording by Alan's Islanders with Nina Kealiiwahamana, along with Japan's Mahina Stars. The leader of the Mahina Stars is steel guitarist Hiroshi Wada. Alan's illustrious family joined in the fun. Alan's uncle, Rev. Abraham Akaka, joined with Alan's father, U.S. Rep. Daniel Akaka, in singing a duet backed by Alan on steel, while their wives and brother Johnny provided the back-up chorus. Genoa Keawe sang a musical tribute to the family with "Akaka Falls", Marlene Sai sang "Kainoa" and Nina Kealiiwahamana followed with

"Hawaiian Souvenirs". Hiroshi Wada showed his expertise on steel guitar and Mahina Stars member Kanichi Sasaki sang Hawaiian songs in beautiful falsetto. In the audience were Jerry and Kaleo Byrd, Hiram and Casey Olsen, and many other stars of the Hawaiian entertainment world.

(This article was submitted by John DeBoe, also by Frank Miller.)

JERRY RECORDS WITH KAORU MINAMI

Jerry Byrd, backed by Hiram Olsen and Kalani Fernandez, has done a recording at Audio Resources with Japanese singer Kaoru Minami. It's to mark the 25th anniversary of Japanese

radio station KZOO. Jerry said he'd have to check his guitar to see if it would still play. I have a hunch it will. Others involved in the recording are: Barney Isaacs, Benny Kalama, Sonny Kamahale and ukulele virtuoso Herb Ohta. The record, managed by the Pandanus Club's Ken Makuakane, will be released in Japan. (*Thank you for the item, Peter Dillingham*)

GEORGE LAKE HAS NEW RHYTHM BACK-UP TAPE FOR SALE:

Here's George's sales pitch: "Tired of practicing to the beat of your left foot? Now you can practice a lot of old time popular standards, waltzes and Hawaiian songs to the accompaniment of a rhythm guitar, ukulele, bass and vibraphones! New cassette now available to club members. "*RHYTHM 1*" VOL 2 No melody line...you are the soloist. Available in cassette at only \$20.00 for 20 songs! (Works out to a buck a song!) Order from: George "Keoki" Lake, 11610 - 111 Ave., Edmonton AB, Canada T5G OE1

KEOKI DOES IT AGAIN!

For your listening pleasure, George Lake has produced "Island Mood", in which he plays all instruments: steel guitar and rhythm guitar, ukulele, bass, and vibraphone. He features several melodies composed by club members: Sound of the Islands by

Nancy Gustafsson, Hawaii Calls But Where Are You? by Billy Reid and Geo Lake, Whispering Aloha by Billy Reid, Lei Kukui by Vic Rittenband, and Charms of the Islands by Billy Reid. This was a very severe winter in Edmonton, so you can imagine George, up to his eaves troughs in snow, fighting off cabin fever by playing his steel guitar and dreaming of Hawaii. His steel guitar is sweeter than ever, easily the best he's recorded. Price \$10.00 U.S., but \$13.00 U.S. for overseas buyers. If you plan to be in Hawaii for the convention, you can buy one from George then.

KAPALAKIKO CALENDAR'S RECOMMENDED STEEL GUITAR RECORDINGS:

David Feet Rogers, *Sons of Hawaii "The Folk Music of Hawaii in Book and Record"*, Island Heritage/Panini Records KN1001

Benny Rogers "*Party Hulas with Genoa Keawe*", Hula Records H507

Barney Isaacs "*Jack DeMello Presents Steel Guitar Magic, Hawaiian Style*", Music of Polynesia Records MOP 31000

Jerry Byrd "*Byrd In Hawaii*" Maple Records MA1002

Billy Hew Len "*Jack DeMello Presents Steel Guitar Magic, Hawaiian Style*", Music of Polynesia Records MOP 31000

Gabby Pahinui, Ry Cooder, "*Chicken Skin Music*", Reprise Records MS2254,

1976

Herbert Hanawahine, Peter Ahia
"*Talena*", Poki Records SP7 9034, 1979

Eddie Palama "*The Sandwich Isle
Band*", Seabird Records SS 1003, 1978
and "*Mix Plate*", Hanaiia Records
H1109, 1981

Charles Fukuba, Kipapa Rush Band,
"*Hardly Working*", Kahanu Records
KHR 1004, 1985

Alan Akaka "*Benny Kalama*", Lehua
Records SL 7054, 1984

Dwight Tokumoto, Keli'i Taua,
"*Honolulu*", Mountain Apple Records
MAC 1012, 1980

Greg Sardinha "*Cyril Pahinui*",
Pahinui Records P6068, 1988

Andrew Iaukea Bright III, Makapu'u
Sand Band "*Winds of Waimanalo*",
Mele Records MLP 6527, 1978 and
Makapu'u Sand Band "*Ho'omalimali*",
KAHANU RECORDS KHR 1010, 1986

Michael Kalamaku Koanui, Dennis
Pavao "*Ka Leo Ki'eki'e*", Poki Records
SP 9042, 1986, Dennis Pavao
"*Hawaiian Soul*", Poki Records SP
9044, 1988, The Pandanus Club "*E
Hula Mai*", Pandanus Records PR 1001,
1987, The Pandanus Club,
"*Ho'okupu*", Pandanus Records PR
1003, 1988

THANK YOU! To the Kapalakiko
Calendar gang for this list.

To order: MAPLE RECORDS, PO Box
172, Station "O", Toronto, Ontario

M4B 2B0. THE HOUSE OF MUSIC,
Ala Moana Centre, 1116, Honolulu, HI
96814 ph 808-949-1051. HARRY'S
MUSIC STORE 3457 Waiala Ave.,
Honolulu HI 96815. KALANI'S
HAWAIIAN RECORDS & TAPES Dept
0-1, Box 1342, Kaneohe, HI 96844.

AUSTRALIAN ROB E G RECORDS,
reported in the October newsletter to
be available at Wizard Records, are
NOT. If any of you wish to order "Rob
E G's Hawaiian Guitar" or "5-4-3-2-1:
The Festival File Volume 3", your best
bet is to write to Tony McDonell, 25
Illingworth Street, Wanniasa ACT
2903, Australia

THOMAS MALM OF SWEDEN has a
new release "*Långtan Till Hawaii*"
(Longing for Hawaii). Standard popular
tunes of Hawaii, Swedish Hawaiian
songs, some of Thomas's compositions,
with lots of steel guitar by Thomas,
also Swedish and English vocals by
Thomas. \$9.00 U.S. includes airmail.
Order from: Thomas Malm, Idungatan
2A, S-352 35 Växjö, Sweden

RUDOLF BARTEN'S K-TEL INTER-
NATIONAL RECORDING. See
write-up under title "Europe".

TAIRO PATCH TALK



CHRISTMAS GREETINGS FROM MRS. BILLY HEW LEN AND FAMILY

This is the first chance I've had to pass on to you the beautiful card we received addressed to all of you. The message is, "Remembering you ALL especially at this beautiful time of year." and in Trini's handwriting: "Aloha, Lorene, Art Ruymar, and Friends of HSGA. Wishing you all much happiness and love at this blessed time. Take care of yourselves and may God bless you richly with peace and good fortune." Believe me, that brought tears to our eyes, and we knew you would be touched by it too. Billy meant so much to all of us.

RITTENBANDS HIT THE KANGAROO TRAIL

It was off to Cairns, Brisbane, Tamworth, etc. etc. for Vic and Nancy as they took the Aloha spirit to Australia. In their month's tour, they did eight Hawaiian shows. They performed a full evening show with Norm Bodkin in Tamworth and had a delightful visit with Bill Sevesi in Auckland, NZ. Nancy was overwhelmed to hear 50 school students, trained by Bill Knox of Canberra, sing her composition "Sound of the

Islands" and dance the hula in Tahitian style.

Back in Hawaii, Vic is in seventh heaven because the Royal Hawaiian Band performed his composition "Lei Kukui" on the occasion of the Rittenband wedding anniversary. It was first sung by Misty Kala'i, then by Ihilani Miller. Vic is now a part of Hawaiian history, since a copy of all band programs is kept in the Archives. Nancy's "Sound of the Islands" is performed several times a year by the band.

By the way, the Rittenbands donated to HSGA a copy of the Tony Todaro book of Hawaiian entertainers. I badly needed it for reference and had tried for over a year to locate one. Mahalo nui loa' to the Rittenbands.

EDDIE KAMAE FILM "LI'A, THE LEGACY OF A HAWAIIAN MAN"

Sam Li'a, 'The Songwriter of Waipio Valley' is the subject of this 60-minute documentary which had its world premiere Nov. 27th., the opening day of the Hawaiian International Film Festival. Li'a (1881 - 1975) lived on the big island. He knew the words and music to the old songs. For 2 years Kamae visited Li'a "only one hour at a time" and taped the songs as the old

man sang them and later put them to notes. Kamae and the Sons of Hawaii perform those songs in the documentary, plus some songs they wrote about Sam Li'a. "What really grabbed me was that he was a kind man and very knowledgeable," Eddie said. "Sam Li'a was never famous and he had no desire to be. He was a man of an older time and an older place, a man whose music and whose life was filled with the spirit of Hawaii - a man of aloha." Sam's father, also a songwriter, wrote the classic "Hiilawe". (*Thank you for the article, John DeBoe*)

REMEMBERING GABBY

The Honolulu Advertiser reports that an hour-long TV special was aired recently in Hawaii in the "Treasures" series on KHON-TV, honoring Gabby for his personal greatness and musical genius. This article requires action. I immediately wrote to the television station and drew their attention to several great steel guitarists and how timely it would be for them to honor one in the same way during the centennial year. Let's see what happens. Incidentally, I learned from the article that Gabby's full name was Charles Philip Kahahawai and that his nickname "Gabby" came from the gabardine pants he wore, and his hair. He is renowned for his kī hō'alu (slack key

guitar) playing, but he was also a steel guitar virtuoso.

HISTORICAL MUSIC - "STEEL GUITAR" BY KEN EMERSON

Funded by U. of Hawaii, the State Foundation on Culture and the Arts, and the Hawaii State Public Library System, Ken Emerson has been on a lecture tour, speaking to school students about the history of steel guitar. Performing on a variety of instruments from the 1890's through the 1930's and up to the modern electric steel, Emerson traced the history and development of the



KEN EMERSON

instrument. Ken is part of a musical family. He taught himself to play by listening to radio broadcasts. He studied with older musicians such as Auntie Alice Namakelua, Raymond Kane, and Gabby Pahinui. He records the old style of music and is in great demand as a performer, internationally. I wish someone would nail his feet to the floor for five minutes so I could catch up with him. He is a person we want very much to see during our music sessions. Could somebody out there send him a coconut cable?

ALAN AKAKA TURNS BUSINESS-MAN

My spy, the world's oldest teenager, tells me that Alan is no longer teaching and plays at the Halekulani only one night a week. The reason? He's become the vice-president of a big corporation. I hope that doesn't mean we've lost another beautiful steel guitarist.

BOB AND JULIE WATERS

After many years of family responsibility have come to a close, Bob and Julie have finally been able to visit their beloved Hawaii. They visited the Polynesian Cultural Centre with Jerry and Kaleo and found the evening show to be more spectacular than ever. I hope all our members who get to Hawaii will put this show on their list as a "must". The foursome visited at the Tau Moe home where Bob surprised Tau with his expertise in the Samoan language. In the last letter we got from Kealoha Life in England, Kealoha said that the Tau Moe's are planning another tour. Please let us know about it, Tau. Our members like to keep track of you and maybe some of them can meet you when you're in their country.

KEONE'S IPŪIPŪ PLATTER

"The missionaries came to do good and they did well." That is an old joke in Hawaii. Actually, the original missionaries did do much good, it was their descendents that did well. It is not the purpose of this column to dwell on what happened to the islands and the people in the 1800's. It is a sad story and well documented.

The original missionaries had two big problems on their arrival. One was to eliminate the



BY JOHN DeBOE

influence over the people of the lawless and immoral crew members of the trading and whaling ships, in general a scurvy bunch, the dregs of American and European society. The second problem was communication with the Hawaiians. It was not possible to teach them the English language until the missionaries learned the Hawaiian language. After the missionaries had written the bible in Hawaiian, they had to teach the Hawaiians how to read. One very effective way to use music and songs (including the hymns of the period) to teach the bible stories. The Hawaiians were a music loving people.

Many songs of Hawaii, including the commercial music of Hollywood and Tin Pan Alley, show the missionary influence. The songs have a melodic sound, as I mentioned in my last column. If you have ever heard a Hawaiian church choir or the Honolulu Boys' Choir sing "Pupu O Ewa" (The Shells of Ewa), you will readily feel the influence of the missionaries. By the way, most of you would know this song as "Pearly Shells". Also, the melody of "Aloha Oe" comes from an old hymn called "The Rock By the Sea".

The gradual influx of outsiders brought more musical influences through the increase in musical instruments of various types. Hawaiian people seemed to have loved stringed instruments. The ukulele was developed from the *braguinha* from Portugal, while the Spanish or standard guitar was brought

over by the Spanish cowboys. The ukulele and guitar were the most popular because they could be played alone and provided accompaniment to singing.

The Spanish cowboys tuned their guitars in the Spanish way, not like the standard tuning of today. The Spanish way involved playing melody on the high strings and rhythm at the same time with the thumb on the low strings. The Hawaiians very likely used the Spanish tuning for a time, but eventually devised the slack key tunings of today. Slack key is similar to the Spanish tuning and also the folk guitar of the 60's.

It is very likely that Kekuku's guitar was tuned either the Spanish way or the slack key way when he dropped **WHATEVER** on the strings and created the mess we are in today. By that I mean, the ultimate tuning has yet to be discovered. This includes the pedal steel players with their 10,12, 14, and 16 strings, umpteen foot pedals, knee and wrist levers. The lost chord has yet to be discovered!

In my next column, I hope to get into the nitty gritty of what I originally started to do, discuss the evolution of tunings. If you don't renew your membership, you just might miss something. I hope to see many of you in Honolulu in May.

NEWS FROM OTHER CLUBS

KAPALAKIKO PRODUCTIONS CALENDAR OF HAWAIIAN EVENTS

In their first edition of 1989, Editor Saichi Kawahara did an excellent write-up of the steel guitar's centennial and said some very nice things about the work we're doing in the H.S.G.A., for which we send our "ALOHA AND MAHALO". The "Calendar" is closely connected to the "Kapalakiko Hawaiian Band" featuring Dwight Tokumoto, Kī hō'alu and steel guitar. They are a very popular professional Hawaiian band in the San Francisco area. If you find yourself in the area, phone 415-824-0639 to find out where they're playing. They are EXCELLENT!! Under "DA KINE DISC" I have listed some of the steel guitar recordings they recommend for good listening.

ALOHA CLUB CONVENTION IN WINCHESTER

The Aloha club will hold its 1989 convention in Winchester IN, on July 13, 14, and 15th. Their guest artist this year will be Alan Akaka. For more information and to register, contact the club's president, Dirk Vogel, Box 24284 Minneapolis MN 55424

STEEL GUITAR INTERNATIONAL

The editor of S.G.I.'s quarterly newsletter "S.G.I. INQUIRER", DeWitt Scott, has given our centennial celebration a great boost in a full-page article about the

invention of the steel guitar and about our club's activities. Scotty has always been very generous and very supportive of our club. If he can possibly be there, we can count on Scotty to be one of the big attractions both on and off the stage at our conventions. If there's any manpower or piece of equipment that we need that Scotty can supply, you can be sure Scotty will do it. He is a man of aloha. And, Scotty, I want you to know - we love you for it.

THE PEDAL STEEL NEWSLETTER

The Pedal Steel Guitar Association, Box 248 Floral Park, New York, 11001, president Bob Maickel, treasurer and photographer Clay Savage, ran an excellent article about our latest Joliet convention. It was written by Clay Savage and featured some great pictures of our Joliet convention. Such articles are a great help to H.S.G.A. I know there are more Hawaiian steel guitar players we haven't reached out to yet, and articles such as the one Clay wrote help us to locate them. By the way, Clay and Lois Savage have attended every convention our club has held, and that includes the Hawaiian convention. They do all the professional-quality photography for us without charging us a cent. There is another example of the spirit of aloha. Whenever I get upset

about the number of kooks in our world, I have to remember that there are also the lovely people like Clay and Lois to keep the world a good place to be. I hope many of you ordered the videos of the Joliet convention that Clay was offering for sale. They are very well done.

STEEL GUITAR AUSTRALIA

Carol Adams tells us that since the official club has folded, a group of steel guitarists in the Sydney area have formed their own club called the "Steel Guitar Co-op". They meet each third Wednesday at the Bankstown Sports Club for a night of music sharing and socializing. For more information, phone Carol at 02-775-360. Carol says Ken Kitching will be in Hawaii for the centennial and Jerry says Ken will play at the Ho'olaule'a.

POLYNESIAN MUSIC AND DANCE ASSOCIATION

As usual, Leo and Mila Tan will be up to their eyebrows in alligators getting ready for their super production at the Waikiki Pavilion, 870 Queen St. East, Toronto. The occasion is the Metro Toronto Caravan. I don't have this year's dates, but my guess is that it will be somewhere between June 15 and 25th. YOU are very welcome to attend and to bring your steel guitar. You will

be welcome to play some time between the shows. To contact Leo and Mila, the phone numbers are 416-492-4222 or 416-391-2945. The house musician is Mike Scott and his group, ph 416-922-7386. Mike has been writing some EXCELLENT articles on the history and development of steel guitar. If I had the space, I'd be asking his permission to copy them for you. But here's a better idea: Why don't you buy a membership in the PMDA and order the back issues?

HAPPY TIME UKULELE CLUB

In our last newsletter I told you that Buddy Griffin is no longer editing the ukulele club's newsletter. We've learned the true genius of this man when we saw a video of a TV show the "Joyce Gay Report" out of Houston TX. Buddy and his Jubilee Banjo Band (about 50 of Buddy's students) put on a great variety show at the Galveston Opera House, an old vaudeville theatre built in 1894. We learned that Buddy is a banjo virtuoso, comedian, singer, and entertainer. If any of you are closet banjo players, I don't want you to give up the steel guitar for it, but you might want to contact Buddy at 2007 Mardel Court, Houston TX 77077. There are two instruments of modern music invented in the U.S.A. One is the banjo, the other is the steel guitar.

FRETTED INSTRUMENT GUILD OF AMERICA (FIGA) CONVENTION

JULY 11-15, 1989, at Toronto Airport Hilton International, 5875 Airport road, Mississauga, Ontario, Canada

L4V 1N1. To ask for hotel registration form and convention registration form, write to FIGA, 2344 South Oakley Ave., Chicago, IL 60608 phone 312-376-1143.

IKUMAIKAGAI



JESS HURT will be in Waikiki for the big bash and he says he'll bring with him a 6-string single neck steel and will play strictly Hawaiian style. This won't be an easy transition for Jess to make, since he's a pedal steel professional. Three cheers for you, Jess. I'm sure you'll handle it, **NO PROBLEM.**

FRANK AND DONNA MILLER, our genial hosts of the Joliet convention, have had it rough since Donna broke both her wrists. "How", you may ask, "did it happen?" Well, it was one of the following: (a) carrying Frank's amplifiers (b) tap dancing (c) competing in a women's boxing match. And that's the **TRUTH!!**

Frank, in the meantime, has joined a musical ensemble that's the hit of the recreational park. All this would be real bliss, except that it's a wild assortment of instruments and they all play the melody line of the old, old standard tunes. It's a case of 'sight-read or perish' in the stampede. After the group had made its musical debut, Frank singled out the bass

player and a good rhythm player and they formed

a Hawaiian quartette with Donna on vocals and wishing she could strum her ukulele. The Hawaiian group is doing very well, so that makes Frank our newest professional.

ELMER RIDENHOUR, the world's oldest teenager, has been chasing around Hawaii looking into things for us. He checked out the rooms at the Queen Kapiolani and assures all of you that "they are superb for the money". He rates the Queen Kapiolani very highly for its older-style charm, second only to the Royal Hawaiian Hotel where the rooms cost \$175.00 per day. For those who come early, May 1st is May Day and "May Day is Lei Day in Hawaii". Talking about Kapiolani Park just across the street from the Queen Kap, Elmer says that on Lei Day "...the park will be filled with lei makers from age 2 - 100 and

hundreds of prize-winning unusual leis that you never dreamed of."

Elmer performed to 1500 people at the Texas Steel Guitar Assoc. in Dallas on March 10th and talked about our club and the centennial. He and his dancer, Ilima, are preparing a show for a festival in June that will host 35,000. Elmer boasts that his protege, Sarah Jory, steel guitarist in England, was rated #3 in Britain's country entertainers. He also states he's been invited to perform at the Institute of Contemporary Arts fair in England in October (reported in the Centennial section). How does Elmer get time for all that? There must be TWO of him.

IAN UFTON was elated to find a write-up in Guitar Player Magazine about one "Ian Ufton, The One Man Band". The write-up, about Ian's recent recording *WHEN YOU SEE HAWAII*, says "....Ufton's expressive lap steel weaves a dozen Hawaiian tunes. Drawing on the inspiration of Roy Smeck, Sol Ho'opi'i, and Dick McIntire, Ufton glides through hulas, sambas, and waltzes with imaginative bar technique and a killer tone. His skillful execution of beautiful melodies and lilting rhythms taps the soul of Hawaiian music...". Yes, Ian, Guitar Player has been very kind and supportive of the steel guitar cause. I wouldn't be surprised to see them do another article on steel guitar, as they called me and I referred them to some of our more knowledgeable members (John DeBoe, Norm English, Bob Waters, and

others) asking questions about instruction courses and the guitar's evolution on this continent. They were trying to track down a magazine published in the 1930's called "The Guitarist" which came from the same address as the Oahu Publishing Co. Our Knowledgeable and Helpful and Well-connected (gee, I hope so!) high-kahuna of the HSGA board of directors, John DeBoe was able to supply the information. What a team!

BILL SEVESI of New Zealand reports that he and Bill Wolfgramm have joined forces and are playing two nights a week at local functions. "After 12 years of retirement," says Bill, "I'm enjoying it, especially the money. I need new electronic equipment." Bill says that Trevor Edmundson is still playing regularly too and...."at this point, since we have reappeared at local dance halls, some unknown Hawaiian steel players come out of hiding.....Greetings to Big Byrd from all of us down here." Thanks, Bill. It's all good news from New Zealand.

TONY McDONELL of Australia sent along a clipping from the Canberra Times. I quote: "FOR THE RECORDS: Steel guitarist Frank Ferera is the most prolific Hawaiian recording artist ever. In the 1920's he had as many entries in the record catalogues as the tenor Enrico Caruso and the violinist Fritz Kreisler combined." Does anyone care to dispute those facts?

AND, does anyone own a Frank Ferera recording? Tony McDonell would like to hear it.

THE AHA KŌ MAIKEMAIKE?

(WHAT DO YOU WANT?)

WANTED: DOUBLE 6 OR DOUBLE 8 STEEL GUITAR: Fender or Rickenbacker preferred (but will consider others) in good condition, not too old. Would like to pick it up in Hawaii at convention. Please write immediately (short of time) to describe model, price, condition of guitar. Georges Chatagny, Ruelle Crible 8, 2072 St. Blaise, Switzerland

WANTED: RICKENBACKER DOUBLE 8, of the late 50's or early 60's. Must be in very clean condition. Richard Beaulac, 2930 N. 35th St. #39, Phoenix AZ 85018

FOR SALE: SHEET MUSIC. HAWAIIAN SONGS OF THE 1930'S. 61 Hawaiian songs, write for complete list and prices. All have piano score, chords. Tablature is in Cmi7, E7, E, C#mi, C#mi7, and A high bass. Prices start at \$1.50 each, or less for a larger order. Joe Boudreau 33732 Harvest Way, Lake Elsinore, CA 92330

WANTED: "A GREAT GUITAR" as described by Penny Yamashita in article under "Kika Kila Kula Kālā"

FOR SALE: "HAWAIIAN MUSIC AND MUSICIANS" by Geo Kanahele being sold as fund-raiser for scholarship fund (see article under Kika Kila Kula Kala). Price \$16.00 plus \$2.00 mailing

(overseas people, please add extra for postage). Sig Vogel, 1101 Casa Grande, Simi Valley CA 93063 ph 805-526-1837

HOT OFF THE PRESS: A NEW PUBLICATION by Thomas Malm, written in Swedish. "Tonga. Ett Kungadöme i Söderhavet" (Tonga, a Kingdom in the South Seas) 160 pages. Many illustrations and maps. \$20.00 U.S. including air mail. Thomas Malm, Idungatan 2A, S-352 35 VÄXJÖ, Sweden phone 0470-18227

FOR SALE. HAWAIIAN TREME-LOA INSTRUMENT by Terry Sullivan. See article under "Kika Kila"

WANTED: HAWAIIAN STEEL BAR by Jim Hanchett of 8157 N. 14th St., Kalamazoo, MI 49007. Jim wants one 7/8" X 3" long. Most bars are 2 7/8" long, which is not quite long enough for Jim, and the pedal steelers' 3 1/4" is too long.

WANTED: RECORDINGS. SHEET MUSIC. ETC. OF BERNIE "KAAII" LEWIS Richard Beaulac met Bernie in southern California and was impressed with his rapid picking and smooth playing. Bernie has since passed away. Richard would like to find out more about Bernie from anyone who knew him, or to locate his wife. Write to Richard at 2930 N. 35th St. #39, Phoenix AZ 85018 or phone 602-224-5506. If you get a story, Richard, please pass it on to

our readers.

FOR SALE: GEMLITE LIGHTED FRET BOARD. A lighted fretboard useful when playing in darkened areas. Gem Specialties, PO Box 534, Tullahoma TN 37388

FOR SALE: GUITAR CASES AND HARDWARE. Regular and airline guitar cases, or will sell you the hardware to build your own case. Just-N-Case, 41 St. Anthony, Florissant, MO 63031

FOR SALE: GUITARS. ACCESSORIES. ETC. Scotty's Music carries a full line of guitar accessories, new and used steel guitars and amplifiers, instruction materials, and recording equipment. Scotty's Music 9535 Midland, St. Louis MO 63114

FOR SALE: BOOKS OF THE PACIFIC ISLANDS. Write for catalogue and price list to: The Book Bin - Hawaii, 351 N.W. Jackson St., Corvallis, OR 97330 or ph 503-752-0040

WANTED: CMAJOR AND A MAJOR TUNING ARRANGEMENTS by Oliver Miller, 21 Meagher Street, Chippendale, Sydney, N.S.W. Australia. Oliver played Nancy's Gustafsson's "SOUND OF THE ISLANDS" for the crowd at the quay near the Opera House in Sydney. He says it was "a show stopper" and he wants "more of that sound". He's willing to pay if you can supply.

FOR SALE: STUDENT MODEL GUITARS (see item under Kika Kila) Designed by Jimmy Hawton. Order

from Andrewa Banjo - Guitar Co., P.O. Box 5923 Napa CA 94581

WANTED: The recording "Byrd In Hawaii", also a Frank Ferera recording. Tony McDonell, 25 Illingworth St., Wanniasa ACT 2903, Australia

FOR SALE: 8 STRING RICKEN-BACKER lap steel Hawaiian guitar with case. Excellent condition. One guitar stand with music rack. One drummer's seat. Bar and picks. Package deal only \$350.00. Freight extra. Fred Samann W. 288 S. 5205 Rockwood TR, Waukesha WI 53186 phone 414-542-0808

FOR SALE: STEEL GUITAR INSTRUCTION BOOKS AND MUSIC THEORY BOOKS. Once a person is able to play, there is plenty of written material available, but GETTING STARTED isn't so easy, so Jim Molberg has written an instruction book that takes you from square one to a point where you can pick up new tunes on your own. "Steel Guitar Lessons - Non Pedal", 79 pages \$35 U.S., "Basic Music Theory - A Simplified Approach", 28 pages \$15 U.S. Books will be sent airmail. Jim will accept personal checks from Australia, Canada, and U.S. Order from: Jim Molberg, PO Box 62-109, Sylvia Park, Auckland 6, New Zealand St. Blaise, Switzerland

H.S.G.A. BUSINESS MEETING

MEMBERSHIP YEAR HAS ENDED

This is the final newsletter of the 1988-89 membership year. It's the time to request your renewal fee of \$20.00 U.S., it's the time for some decision making, and it's the time for me to do the annual report.

ELECTION OF BOARD AND EXECUTIVE

Our terms of office are organized so that every second year half the board and executive come up for re-election. Now, when you send in your renewal fees is the time to nominate someone, if you wish. Board members whose terms expire in June 1990 are: John DeBoe, Ed Maunakea, and Frank Miller. Both executive positions expire in June 1990: Art Ruymar, vice president-treasurer, and myself, Lorene Ruymar, secretary-editor-president. As both of us are involved, we have appointed board member Vern Cornwall to act as returning officer. See the insert sheet for details.

MEMBERSHIP

Our membership is 308, of which 7 are honorary, 14 complimentary, and 287 paid members. The complimentaries are: people who are doing special work for the club, directors of other clubs who give us reciprocal membership, and people who are temporarily down

on their luck whom we put on our "Aloha List."

FINANCES

\$5578.20 total membership dues collected 1988-89

\$1388.22 remaining, to cover this issue, the final newsletter of the membership year. Membership dues are used for producing the four newsletters and to cover cost of correspondence from this office.

Amount Art and I spent out of pocket to fund the first two newsletters under our editorship **\$3108.44**

Amount donated by members _____ **1528.35**

Amount we are still short _____ **\$1580.09**

We will now consider the fund-raising to be ended, and a very heartfelt thank-you to all those who donated.

Proceeds of conventions are held separately from membership fees. Frank Miller holds \$1500 to fund the next Joliet convention and we have \$544.29 in a general fund, which is being used right now to set up the Hawaiian convention. No salaries or personal expenses are paid by club funds, all work is done on a volunteer basis.

REVISION OF CLUB BY-LAWS

When this club began in October, 1985 we didn't have a proper name at the time the by-laws were drawn up. The

original by-laws called for SEVEN board members plus a president. We now have NINE board members plus a president. That change has never been ratified by the members. The original by-laws states one of the purposes of the club is "TO BUY, SELL AND HOLD TITLE TO REAL AND PERSONAL PROPERTY..." which we felt was unnecessary and could cause problems.

When we began negotiations with the I.R.S. to have this club declared a Tax-exempt Non-Profit Society under section 501(c)(7), they asked us to provide a copy of the by-laws. We therefore revised the original by-laws to

show the club's correct name, the increase to 9 board members, and the deletion of the "purpose" regarding buying and selling real and personal property. Those changes have been approved by the board. We now must ask you, the members, to ratify the new by-laws. The membership renewal form has a space for that purpose. If the amendments are not approved by the members, we will have to re-draft them and take another vote, then send the I.R.S. a copy of our approved by-laws. If you wish to see a copy of the revised by-laws, please send a self-addressed stamped envelope.



NEW MEMBERS:

BORROMEIO, Luna

978 79th St.,

Brooklyn N.Y.

11228

DILLINGHAM, Peter

PO Box 3436

Honolulu HI

96801

PITMAN, Donald M.

6208 Earl Sapp Rd.,

Panama City FL

32404

WICKS, Dale N.

32620 Gruwell St.,

Wildomar CA

92395

YAMASHITA, Penny

Mahealani

92-777 Paakai St.,

Ewa Beach HI

96707

CHANGE OF ADDRESS:

GRIFFIN, Buddy

2007 Mardel Court,

Houston, TX

77077

PAYNE, Cec

206-840 Concession St.,

Hamilton, Ont.

L8V 1E2

HSGA MEMBERSHIP RENEWAL

NAME _____

ADDRESS _____

CITY, STATE, ZIP _____

COUNTRY _____ PHONE _____

PERMISSION IS ASSUMED TO PUBLISH YOUR NAME AND ADDRESS
IN THE CLUB ROSTER UNLESS YOU WRITE "NO" HERE _____

PERMISSION IS ASSUMED TO PUBLISH YOUR PHONE NUMBER IN
THE CLUB ROSTER UNLESS YOU WRITE "NO" HERE _____

MEMBERSHIP RENEWAL FEE \$20.00 U.S. ENCLOSED _____
Draw checks payable to H.S.G.A., mail to: H.S.G.A.,
Box 3156 Bellingham WA, 98227

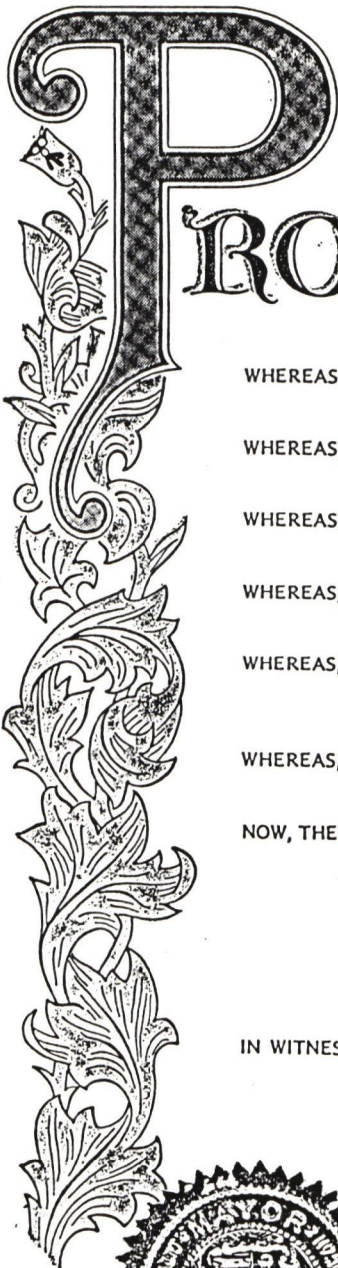
NOMINATIONS for 1990 election of board and executive
must be sent to: Vern Cornwall, 408 Tonti, South Bend
IN, 46617

BY-LAWS REVISION BALLOT:

DO YOU APPROVE THE INCREASE IN NUMBER OF BOARD MEMBERS
FROM 7 TO 9? YES _____ NO _____

DO YOU APPROVE OF THE DELETION OF THE WORDS "TO BUY,
SELL AND HOLD TITLE TO REAL AND PERSONAL PROPERTY"?
YES _____ NO _____

DO YOU WISH TO MAKE ANY COMMENT ABOUT THE CLUB'S
OPERATION? WE'D LIKE TO HEAR FROM YOU.



OFFICE OF THE MAYOR
CITY AND COUNTY OF HONOLULU

PROCLAMATION

WHEREAS, the Hawaiian Steel Guitar Association is a global communications network comprised of about 300 Hawaiian music enthusiasts; and

WHEREAS, the group was organized to revive the popularity of the musical instrument in much the same way the slack key guitar has enjoyed a resurgence in recent years; and

WHEREAS, toward this end, a scholarship fund has been established to provide formal education for youngsters wishing to pursue musical training; and

WHEREAS, this year marks the centennial anniversary of the invention of the Hawaiian steel guitar with the credit attributed to Joseph Kekuku; and

WHEREAS, although others had made music by sliding combs and glass tumblers up and down the guitar strings, the Kamehameha student is acknowledged as having invented the apparatus in the school's machine shop in 1889; and

WHEREAS, the Hawaiian Steel Guitar Association will hold a convention at the Queen Kapiolani Hotel during May 7-14, 1989,

NOW, THEREFORE, I, FRANK F. FASI, Mayor of the City and County of Honolulu, do hereby proclaim 1989 as

THE YEAR OF THE STEEL GUITAR

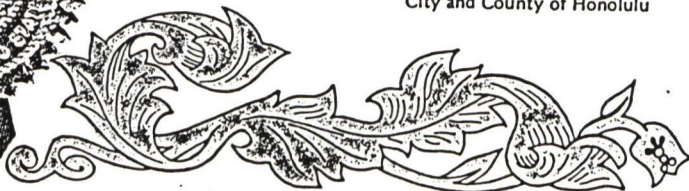
in the City and County of Honolulu in special recognition of the 100th anniversary of the authentically Hawaiian musical instrument and urge everyone in our community to support its revival in the islands.

IN WITNESS WHEREOF, I have hereunto set my hand and caused the Seal of the City and County of Honolulu to be affixed.

Done this 8th day of December, 1988, in Honolulu, Hawaii.




FRANK F. FASI, Mayor
City and County of Honolulu



A

'IMI AU IĀ 'ŌE

Arranged by L. Ruymar

high bass tuning

System 1: Treble clef, key signature of one sharp (F#), 3/4 time. Chords: D, D-G, D, D, A7, A7.

System 2: Treble clef, key signature of one sharp (F#), 3/4 time. Chords: D, D, D-G, D, D, A7.

System 3: Treble clef, key signature of one sharp (F#), 3/4 time. Chords: A7, D, A7, D, D-G, D, D.

System 4: Treble clef, key signature of one sharp (F#), 3/4 time. Chords: A7, A7, D-D#, E7-A, A, A-D, A.

System 5: Treble clef, key signature of one sharp (F#), 3/4 time. Chords: A, E7, E7, A, A7, A, A, E, E.

Row 2, bars 3 - 7 have melody note on lower string, harmony on upper string. Strike lower string slightly BEFORE and LOUDER THAN the upper string.

E 13th

KUU IPO LANI E

Intros

SLOW TEMPO

10 - 8 6 - 1 - 2

9 7 6 1 2

EB Bb - F7 Bb F7 - G°

1 R 3 5 11 13 R 6 6 - - - 11 12

2 4 11 13 13 13 6 6 - - - 6 6 - 11 12

F7 F7 Bb Bb - G°

1 R 3 5 11 10 R 8 5 6 6 - - - - - 8

2 4 11 9 8 4 6 6 6 - - - - - 6 6 - - - 8

F7 F7 Bb Bb

10 - 9 8 - 9 10 - - - 7 - 9

10 9 8 8 9 8 8 8 9

D7 D7 Gm Gm

9 9 - - R 8 7 6 5 8 R 3 - 2

8 9 8 7 6 4 8 2 1 2

Gb Gb F7 Cm - Gb7

